

InnoVet[®] VERSA



**DIGITAL READY
PROVEN PERFORMANCE**

THE MOST TRUSTED NAME IN VETERINARY RADIOGRAPHY

InnoVet[®] VERSA

The premier analog solution for film today and digital imaging tomorrow.

INNOVET MEANS INTEGRITY

InnoVet revolutionized veterinary radiography in 1991 with the first x-ray system designed by veterinarians. Since then, InnoVet has manufactured more than 6,000 veterinary x-ray systems, making it the #1 veterinary x-ray manufacturer in the United States.

In total, InnoVet systems produce nearly 20 million images per year worldwide. To date, almost 80% of all DVM undergraduates in the United States are trained on an InnoVet.

Add to that, the industry's best warranty and the lowest overall cost of ownership and it's no wonder InnoVet is the most trusted name in veterinary radiography.

AMERICAN MADE

All InnoVet x-ray systems are built in our ISO 9001 certified factory in Chicago, IL. With support staff and materials on-site, most systems and parts can be shipped from our facility the same day.

LOCAL SUPPORT

Capital equipment is a long-term investment that deserves personal attention from a service professional who understands your practice. Regional InnoVet dealers are factory-trained to install and service your x-ray system with immediate on-site support.

FLEXIBLE FOR QUICK POSITIONING

The x-ray tube can be lowered to table height and turned a full 90 degrees for standing lateral exams.

The x-ray tube and cassette tray move in tandem across the entire length of the table so you can adjust the central ray, not the patient. An interlock easily disengages for angled exams.

RELIABILITY & POWER

The Versa offers the same long-term, dependable performance that has become synonymous with the InnoVet name.

With its 300 mA (500 mA optional) power, our factory-integrated, high frequency x-ray generator can handle the heaviest of workloads.



SAFETY, INSIDE AND OUT

Versa's sleek design also provides extraordinary safety:

- Versa's encased x-ray tube reduces radiation leakage by over 50%.
- A unique tube column and tube cover safeguard staff & patients from exposed electrical wires.
- Rounded corners prevent hip-level bruising common to veterinary technicians.

SMALL, BUT MIGHTY

Since space is a luxury in many veterinary practices, the stationary-top Versa system has only a 34" x 57" footprint.

When upgrading to a digital system, no additional space is required. Digital receptors and computers can all be placed inside the table pedestal.





PRACTICAL SOLUTIONS FOR EVERYDAY TASKS

Versa's light field collimator can be operated with gloved hands, includes cushioned corners to prevent head injuries.

- Extended light "on" time.
- Its swiveling capability makes table top exams easy.
- Bulb replacement is done in minutes without the use of tools.
- Our unique collimator also meets the Federal radiation leakage requirement for human applications.



SIMPLIFIED FOR EASE-OF-USE

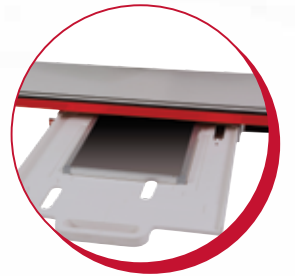
The tableside control panel requires entry of only the kVp and mAs. The x-ray generator automatically selects the shortest exposure time. Digital displays place mA, kVp, and mAs readouts directly in your line of vision.

EXCEPTIONAL DURABILITY...IT'LL TAKE A BEATING

Versa's signature high-density, durable plastic exterior showcases a glossy finish that is easy to clean and never rusts.

EASY TO USE CASSETTE TRAY

Durable yet lightweight, there are no movable parts. Cassettes simply drop into position and clean-up is easy too, just rinse off.



INTUITIVE ADDITIONS COME STANDARD

Table-level animal restraints are on both sides of the table-top for easier positioning.



OUTSTANDING WARRANTY

As a testimonial to our commitment to quality, InnoVet proudly backs every Versa with a 7-year parts warranty on all components of the system, the best warranty in the industry.

CUSTOMIZE TO YOUR NEEDS

By selecting from the following options, you may tailor the system to meet your specific radiographic needs and at the same time avoid paying for unwanted features.

ADDITIONAL POWER

Upgrade the standard 300 mA high frequency generator to an even more powerful 500 mA for patients of all sizes.

4-WAY FLOAT TOP TABLE

Ideal for large patients, the generous 67" x 29" table top allows movement so you can maneuver the table, not the patient.

STORAGE BINS

Cassettes and other items may be stored in one or two convenient and radiation safe locations.



HANDS-FREE LIGHT SYSTEM

When you cannot use your hands to reactivate the collimator light, a simple toe tap will trigger the light so you can always keep both hands on the patient.



ANATOMICAL PROGRAMMING

Fast, automatic technique selection provides consistent, effortless images.

FOOT TREADLE EXPOSURE CONTROL

An optional foot treadle provides exceptional operator control over the exposure circuit. The rugged corrosion-resistant stainless steel pedal is easily operated from any position surrounding the x-ray table.

INTRODUCING THE VERSA FAMILY OF RADIOGRAPHIC SYSTEMS

Versa x-ray systems are the most sophisticated digital and digital-ready systems available.

To learn more about the Versa DR or Versa Touch, please contact:
sales@innovet4vets.com



InnoVet®

2901 W. Lawrence Ave. • Chicago, IL 60625
800-972-9776 • 773-588-2444
Fax 773-588-3424
www.innovet4vets.com



LITV024- 0410 2.5M